

NOTES

1. ALL DIMENSIONS ARE IN CENTIMETERS UNLESS NOTED OTHERWISE
2. ANY ELEMENTS OR OBJECTS THAT ARE NOT DIMENSIONED SHALL NOT BE SCALED
3. CO-ORDINATE SYSTEM USED ON THIS DRAWING IS WGS 84.
4. RECLAMATION FILL LEVELS VARY ACROSS THE SITE. MAXIMUM LEVEL ASSUMED TO BE +3m Kr86 (+3,08m EVRF2007).
5. ALL PAVING DESIGN SHOWN IS INDICATIVE ONLY. THE CONTRACTOR SHALL VERIFY AND DESIGN HIS OWN PAVING DESIGN TO ACCOMMODATE THE EMPLOYER'S REQUIREMENTS

- Terminal Storage Paving
UDL = 10t/m²
BGP = 40t/m²
- Out/In bound Area Paving
UDL = 20t/m²
BGP = 40t/m²
- Ro-Ro Ramp
UDL = 20t/m²
- Access Road Paving
UDL = 2t/m²
- Crew Transfer Corridor

REV	DATE	DESCRIPTION	BY	CHK	APP
P04	08/12/23	TENDER ISSUE	AS	AT	AT
P03	21/11/23	TENDER ISSUE	AS	AT	AT
P02	31/10/23	TENDER ISSUE	AS	AT	AT
P01	27/09/23	TENDER ISSUE	AS	AT	AT
P00	11/08/23	TENDER DRAFT	AS	AT	AT

CLIENT ISTRANA / Baltic Hub Container Terminal Sp. z o.o.

ISTRANA Baltic Hub Container Terminal Sp. z o.o.
ul. Kontenerowa 7, 80-601 Gdańsk

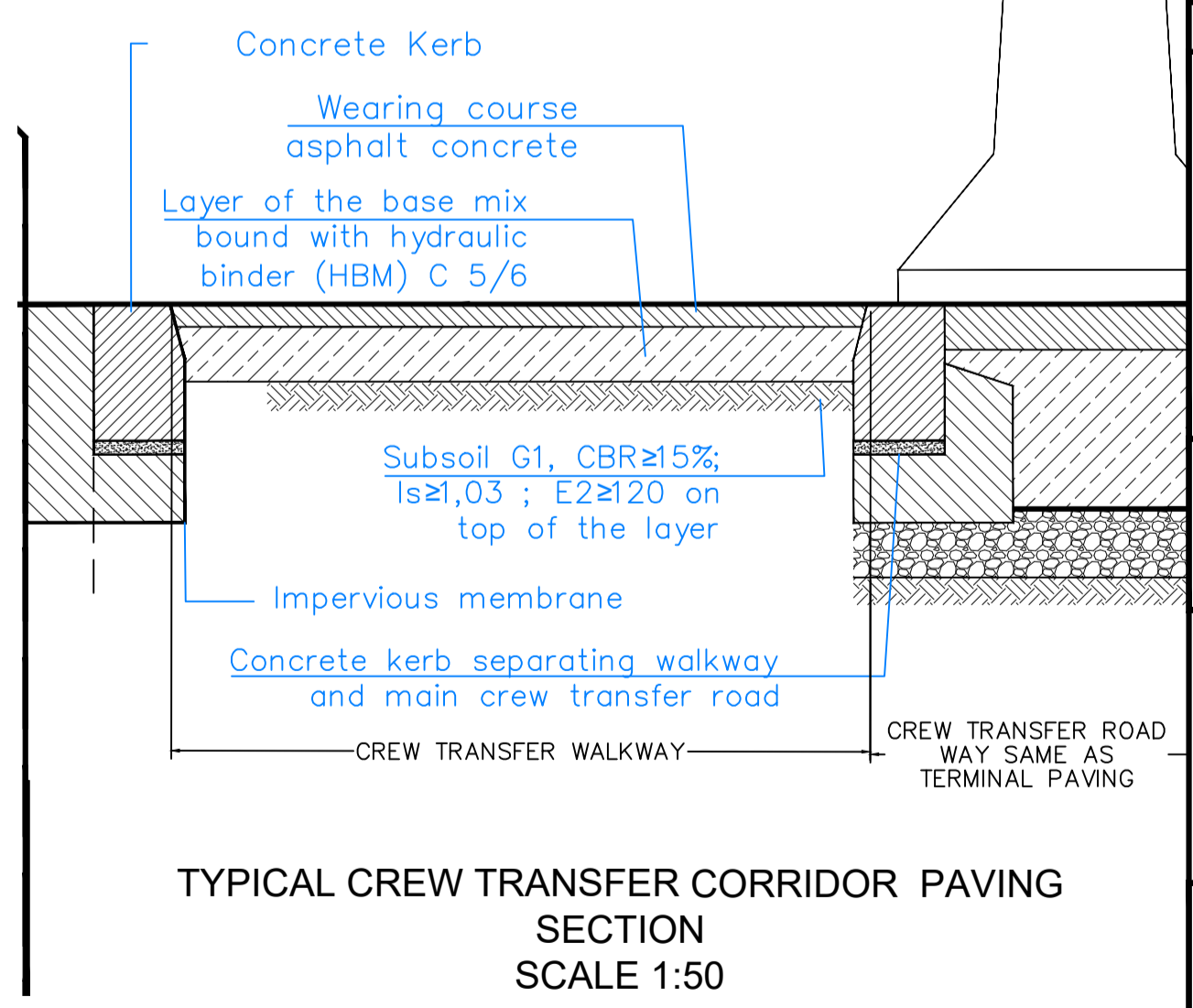
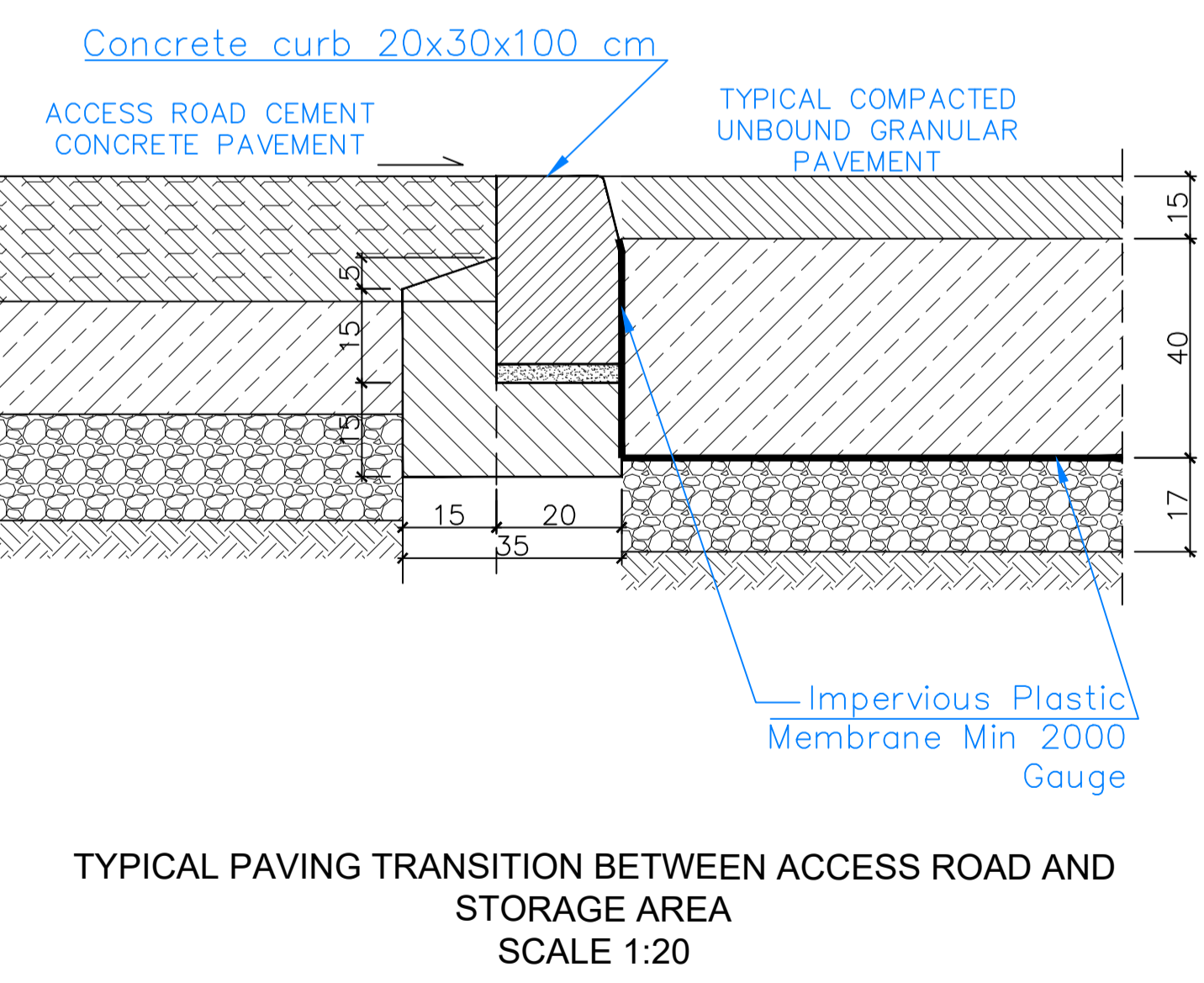
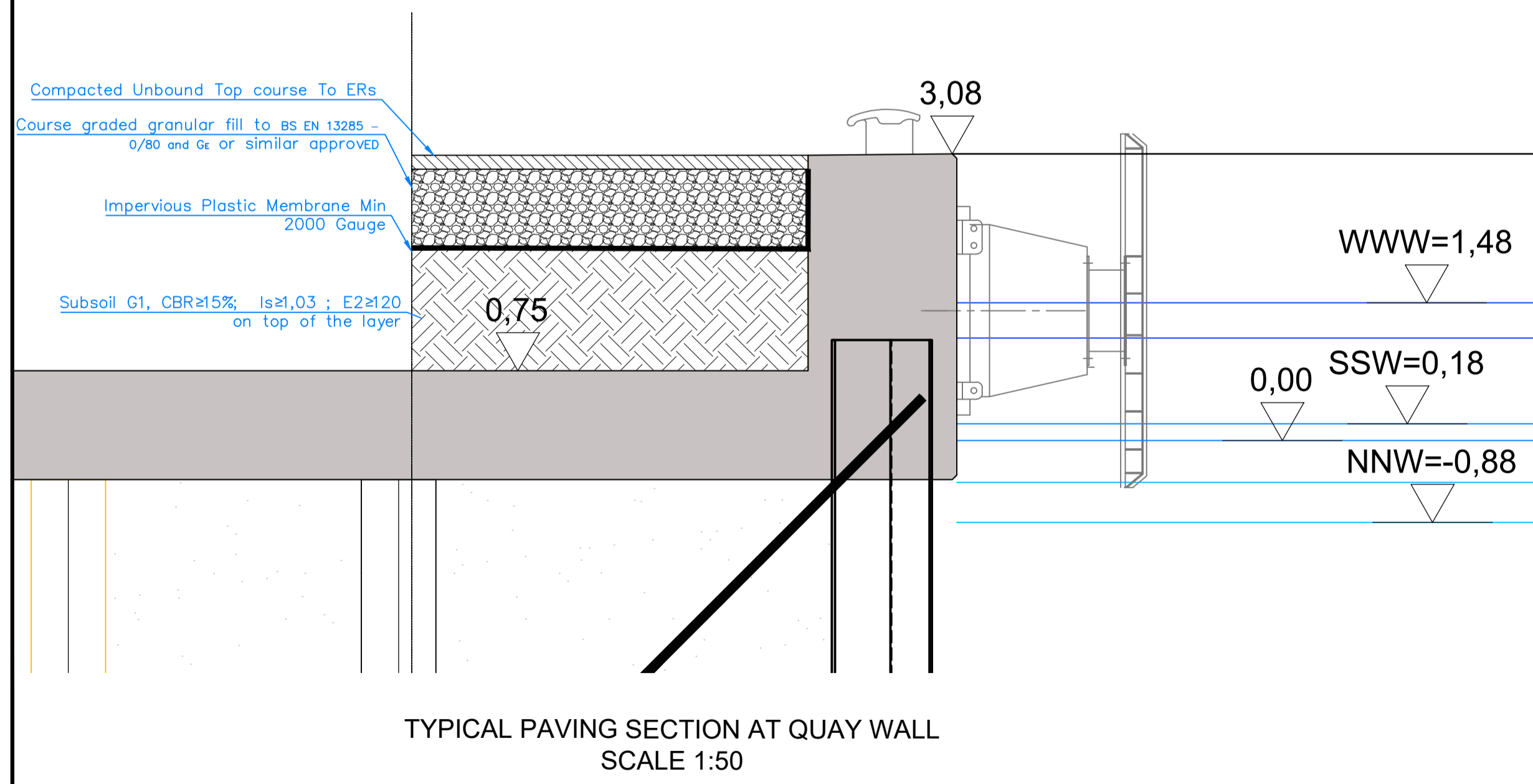
PROJECT
BAL TIC HUB T5 OFFSHORE WIND TERMINAL PROJECT

TITLE
TYPICAL PAVING PLAN

HaskoningDHV Polska Sp. z o.o.
ul. Dzielna 60
01-029 Warszawa

Royal HaskoningDHV
Enhancing Society Together

DRAWN	CHECKED	APPROVED
AS	AT	CJS
DATE	SCALE	REF.
08/08/23	AT AT VARIES	
DRAWING No.	SUITABILITY	REVISION
PC1063-RHD-T5-OW-DR-CP-2000	S4	P04



PAVING SHOWN MUST BE VERIFIED BY THE CONTRACTOR AND IS FOR INFORMATION ONLY.

NOT FOR CONSTRUCTION

TENDER