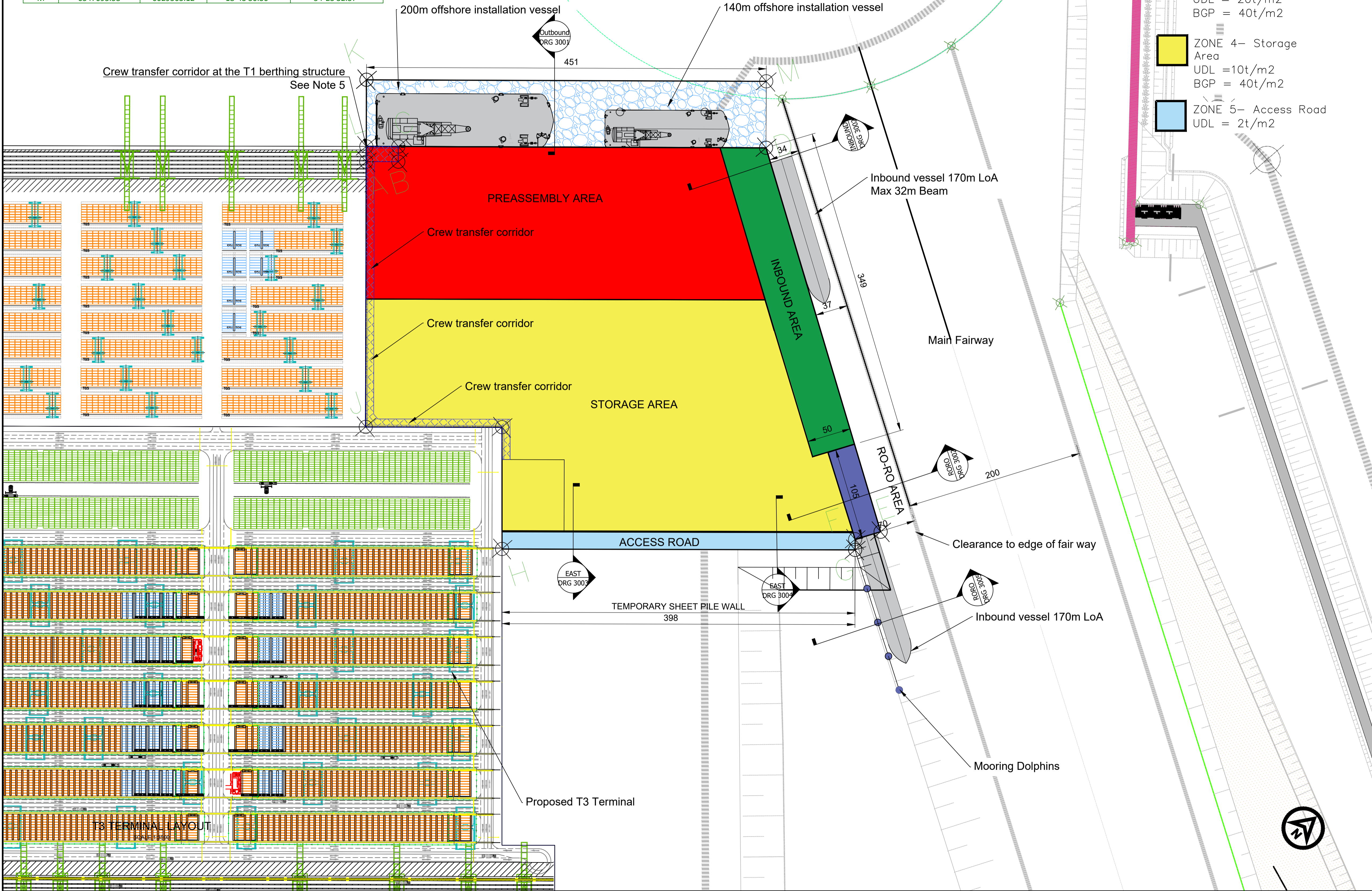


LIST OF CO-ORDINATES				
Point	X [PL-2000]	Y [PL-2000]	Longitude	Latitude
A	6546870.14	6028962.01	18°43'17.57"	54°23'19.47"
B	6546893.73	6028989.35	18°43'18.90"	54°23'20.35"
C	6546880.76	6029000.58	18°43'18.18"	54°23'20.71"
D	6547152.34	6029314.09	18°43'33.41"	54°23'30.76"
E	6547564.79	6029129.91	18°43'56.16"	54°23'24.67"
F	6547552.55	6029102.52	18°43'55.47"	54°23'23.79"
G	6547561.58	6029094.71	18°43'55.97"	54°23'23.53"
H	6547301.12	6028793.39	18°43'41.36"	54°23'13.87"
I	6547197.02	6028882.94	18°43'35.64"	54°23'16.80"
J	6547096.49	6028766.53	18°43'30.01"	54°23'13.07"
K	6546800.30	6029022.32	18°43'13.74"	54°23'21.44"
L	6546857.10	6028973.27	18°43'16.86"	54°23'19.84"
M	6547095.58	6029363.12	18°43'30.30"	54°23'32.37"



- NOTES/UWAGA**
- ALL DIMENSIONS ARE IN METERS UNLESS NOTED OTHERWISE
 - ANY ELEMENTS OR OBJECTS THAT ARE NOT DIMENSIONED SHALL NOT BE SCALED
 - CO-ORDINATE SYSTEM USED ON THIS DRAWING IS WGS 84.
 - ALL EQUIPMENT AND COMPONENTS SHOWN ARE INDICATIVE ONLY.
 - THE CONTRACTOR SHALL ASSESS THE LOADING CAPACITY OF THE EXISTING T1 STRUCTURE WHICH IS PROPOSED TO BE PART OF THE CREW TRANSFER CORRIDOR. THE LIMITING LOADING CAPACITY MUST BE CLEARLY STATED BY THE CONTRACTOR BASED ON HIS ASSESSMENT OF THE STRUCTURE AND HOW THE FINAL OUTBOUND QUAY WALL WILL BE INTEGRATED WITH THE EXISTING T1 STRUCTURE.

ZONAL PLAN AREAS

Zone 1	- 17,635m ²
Zone 2	- 3,150m ²
Zone 3	- 72,500m ²
Zone 4	- 111,875m ²
Zone 5	- 7,935m ²

NOT FOR CONSTRUCTION

TENDER

REV	DATE	DESCRIPTION	BY	CHK	APP
P04	05/12/23	TENDER ISSUE	AS	AT	AT
P03	21/11/23	TENDER ISSUE	AS	AT	AT
P02	21/10/23	TENDER ISSUE	AS	AT	AT
P01	26/09/23	TENDER ISSUE	AS	AT	AT
P00	11/08/23	TENDER DRAFT	AS	AT	AT

Revision History

Client ISTRANA / Baltic Hub Container Terminal Sp. z o.o.



Project
BALTIC HUB T5 OFFSHORE WIND TERMINAL PROJECT

Drawing Title
T5 TERMINAL LAYOUT GENERAL ARRANGEMENT

HaskoningDHV Polska Sp. z o.o.
ul. Dzielna 60
01-029 Warszawa



DRAWN AS	CHECKED AT	APPROVED CSJ
DATE 08/08/23	SCALE AT 1:2500	REF.
DRAWING No. PCI063-RHD-T5-OW-DR-Z-1200	SUITABILITY S4	REVISION P04