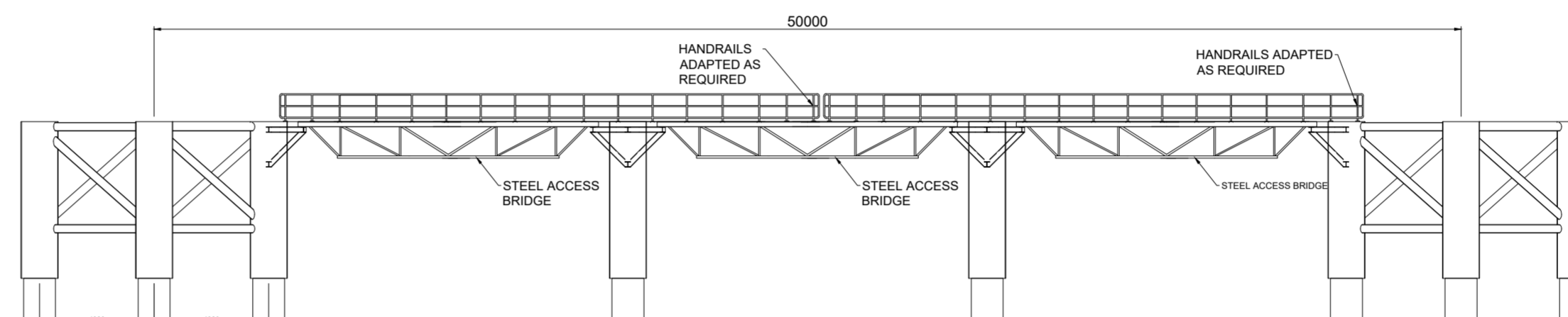
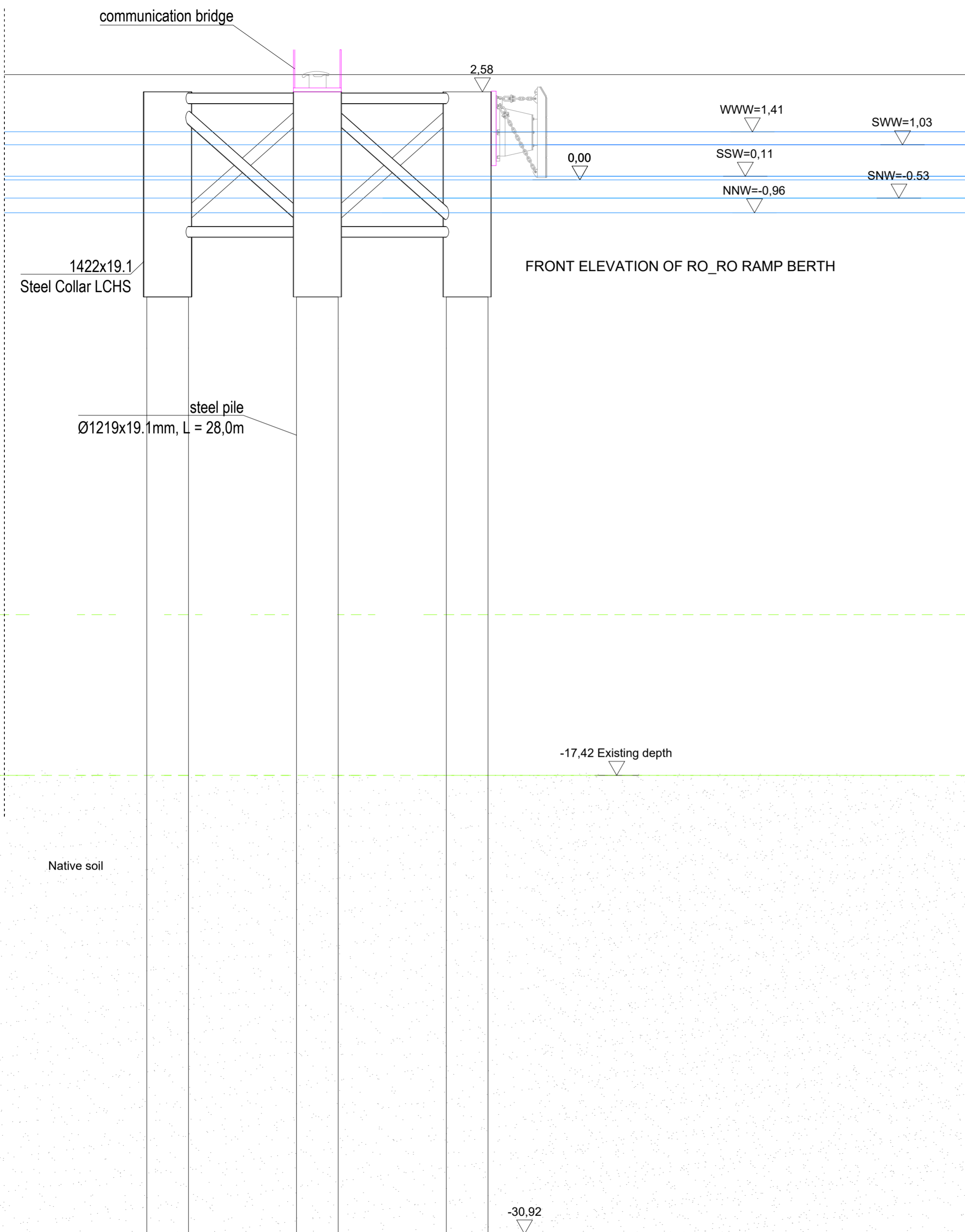


DOLPHIN DESIGN SHOWN MUST BE VERIFIED BY THE CONTRACTOR AND IS FOR INFORMATION ONLY.

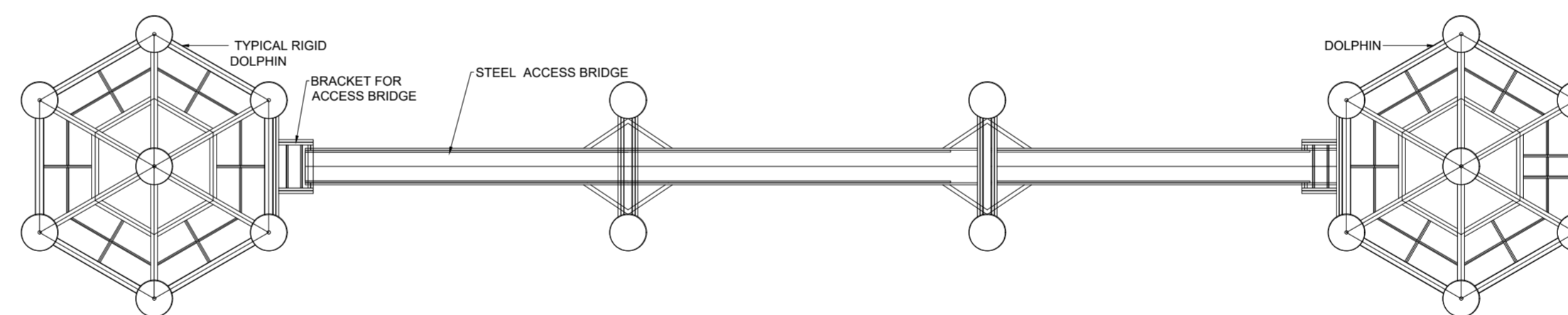
Notes:

- All levels shown are in accordance with the EVF2007 datum (Elevations in Kr86bis + 0,08m = Elevation in EVRF2007)
- Dimensions are in millimeters unless otherwise stated.



DOLPHIN ACCESS ELEVATION
(SCALE 1:200)

View of mooring dolphin
SCALE 1:200



DOLPHIN ACCESS PLAN
(SCALE 1:200)

**NOT FOR
CONSTRUCTION**

TENDER

Revision	Date	Description	Drawn	Checked	Approved
P03	05/12/23	Tender Issue	ADT	AT	CSJ
P02	21/11/23	Tender Issue	ADT	AT	CSJ
P01	31/10/23	Tender Issue	ADT	AT	CSJ
P00	29/09/23	Draft tender issue	ADT	AT	CSJ

Client: ISTRANA / Baltic Hub Container Terminal Sp. z o.o.

Baltic Hub ISTRANA/ Baltic Hub Container Terminal Sp. z o.o.
ul. Kontenerowa 7, 80-601 Gdańsk

Project: BALTIC HUB T5 OFFSHORE WIND TERMINAL PROJECT

Drawing Title: ALTERNATE MOORING DOLPHIN - CHARACTERISTIC CROSS SECTION

Designing company:	HaskoningDHV Polska Sp. z o.o. ul. Działowa 50 01-029 Warszawa	Drawn: ADT	Checked: AT	Approved: AT
Date:	11/08/23	Scale:	1:100,200	
Drawing number:	PC1063-RHD-T5-DR-CM-3007	SUITABILITY:	S4	REVISION: P03