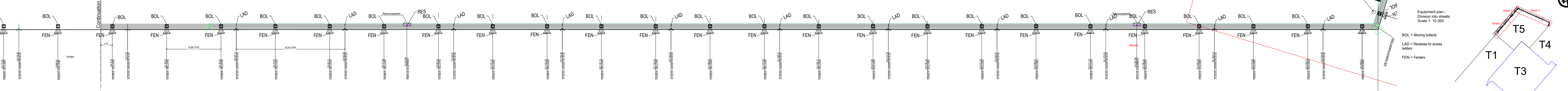
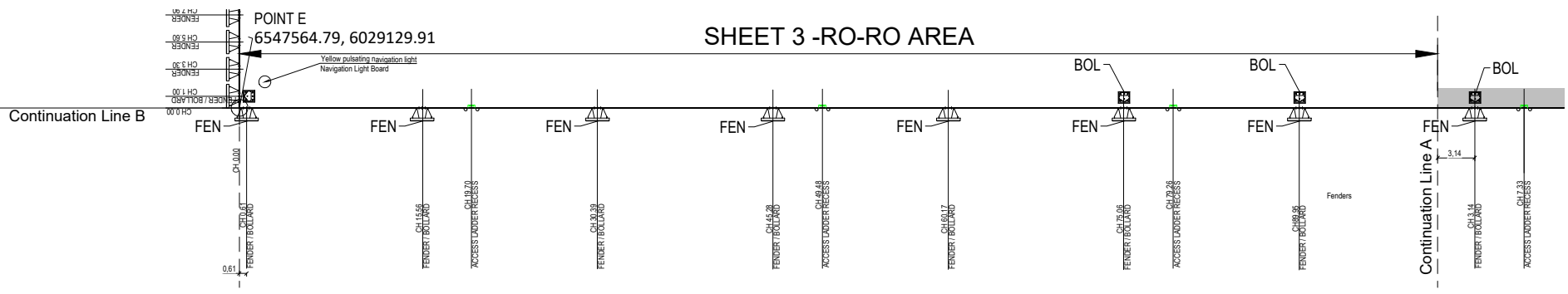


RO_RO AREA SHEET 3 - 350m INBOUND BERTH

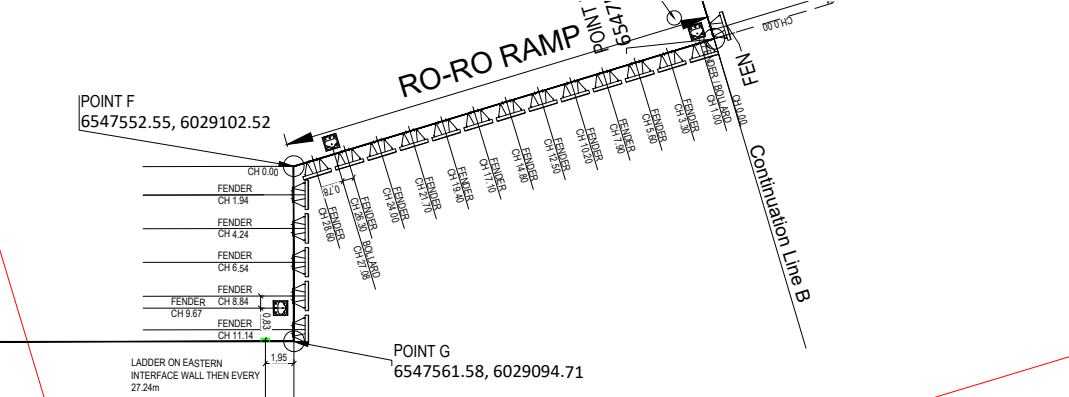


Equipment plan - Division into sheets Scale 1: 10 000

BOL = Mooring bollards
LAD = Recesses for access ladders
FEN = Fenders



SHEET 3 - RO-RO AREA



- NOTES
1. ALL DIMENSIONS ARE IN METERS UNLESS NOTED OTHERWISE
 2. ANY ELEMENTS OR OBJECTS THAT ARE NOT DIMENSIONED SHALL NOT BE SCALED
 3. CO-ORDINATE SYSTEM USED ON THIS DRAWING IS WGS 84.
 4. RECLAMATION FILL LEVELS VARY ACROSS THE SITE. MAXIMUM LEVEL ASSUMED TO BE +3m Kr86 (+3,08m EVRF2007).
 5. ALL FENDER AND BOLLARD SPACING, NUMBER AND LOCATIONS TO BE VERIFIED BY THE CONTRACTOR THROUGH STATIC AND DYNAMIC MOORING ANALYSIS.

QUAY EQUIPMENT LAYOUT SHOWN MUST BE VERIFIED BY THE CONTRACTOR AND THIS DRAWING IS FOR INFORMATION ONLY. THE FINAL BUILDING PERMIT SHALL BE USED AS THE AGREED LOCATION OF QUAY SIDE EQUIPMENT FOR THE OUTBOUND QUAY AND RO_RO RAMP AREAS.

NOT FOR CONSTRUCTION

TENDER

Revision	Date	Description	Drawn	Checked	Approved
P03	08/12/23	Tender issue	ADT	AT	CSJ
P02	21/11/23	Tender issue	ADT	AT	CSJ
P01	31/10/23	Draft tender issue	ADT	AT	CSJ
P00	28/09/23	Draft tender issue	ADT	AT	CSJ

ISTRAMA / Baltic Hub Container Terminal Sp. z o.o.

Baltic Hub ISTRAMA Baltic Hub Container Terminal Sp. z o.o.
ul. Kontenerowa 7, 85-607, Gdańsk

Project: BALTIC HUB T5 OFFSHORE WIND TERMINAL PROJECT
Drawing title: Quay Equipment Plan - Sheet 3

Drawn by:	ADT	Checked by:	AT
Date:	28/09/23	Scale:	1:200
Drawn by:	ADT	Checked by:	AT
Drawn by:	ADT	Checked by:	AT

PC1063-RHD-T5-OW-DR-CM-3101